

Reifen_Profilübersicht

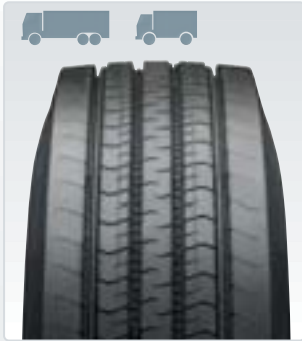
Nutzfahrzeuge

REIFEN



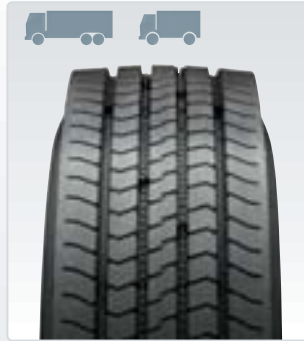
Interpneu
Handelsgesellschaft

Vorderachse



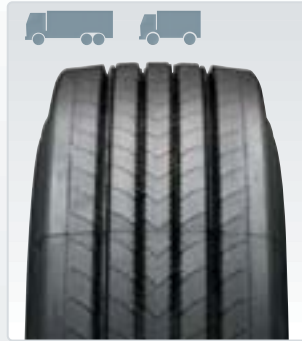
Bridgestone
R 249

Bild 1018



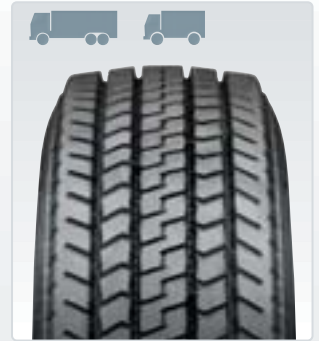
Bridgestone
R 297

Bild 1028



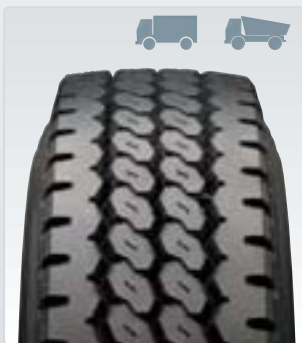
Bridgestone
R 227

Bild 1038



Bridgestone
M 788

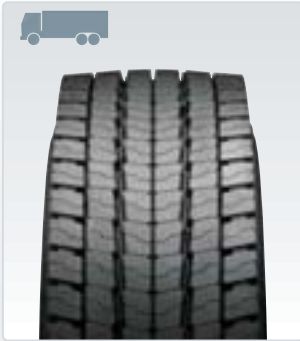
Bild 1048



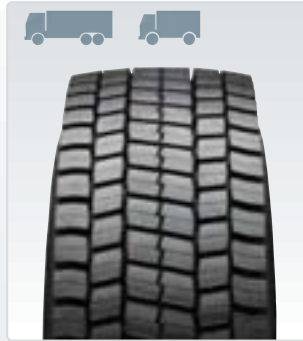
Bridgestone
M 840

Bild 1058

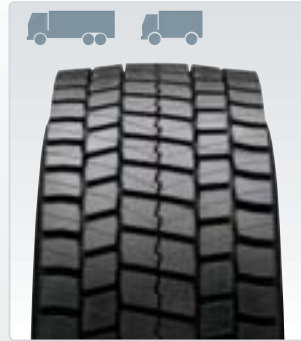
Antriebsachse



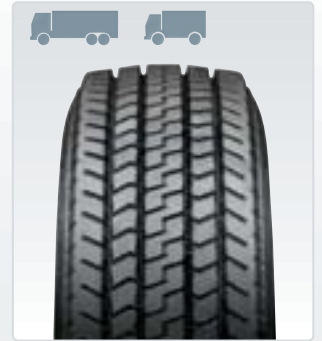
Bridgestone M 749 Bild 1068



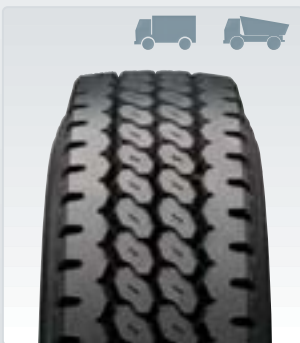
Bridgestone M 729 Bild 1078



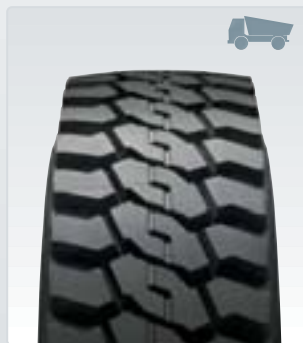
Bridgestone M 730 Bild 1088



Bridgestone M 788 Bild 1098

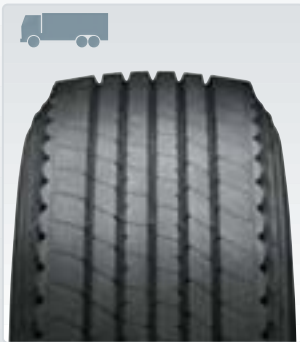


Bridgestone M 840 Bild 1108

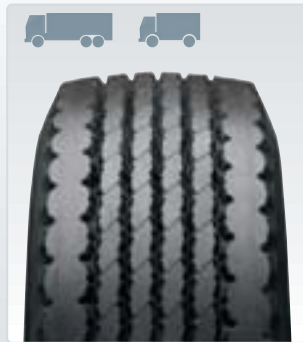


Bridgestone L 355 Bild 1118

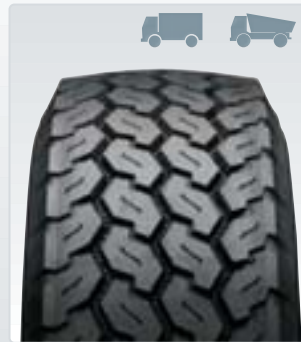
Auflieger



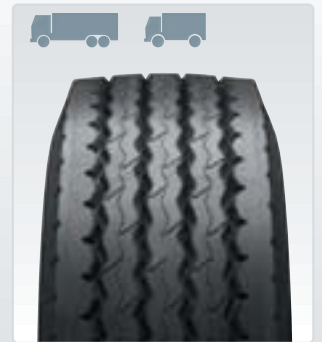
Bridgestone R 174 Bild 1128



Bridgestone R 164 Bild 1138

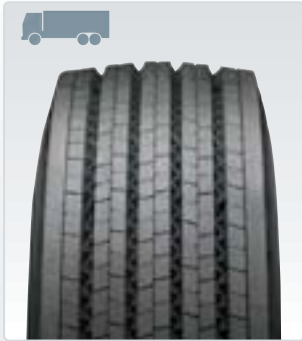


Bridgestone M 748 Bild 1148



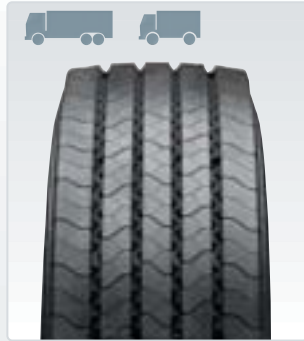
Bridgestone R 168 Bild 1158

Vorderachse



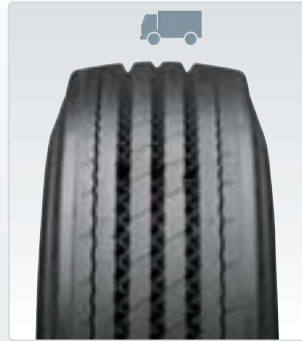
Continental
HSL 1

Bild 1168



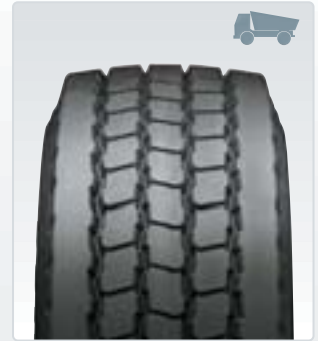
Continental
HSR 1

Bild 1178



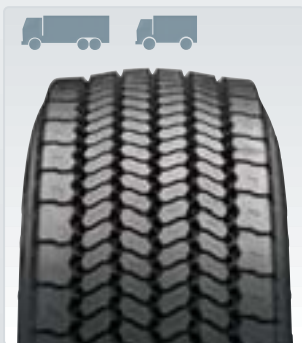
Continental
HSU 1

Bild 1188



Continental
HSC 1

Bild 1198

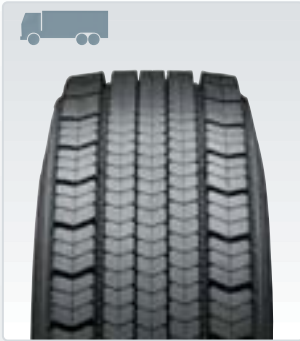


Continental
HSW Skandinavia

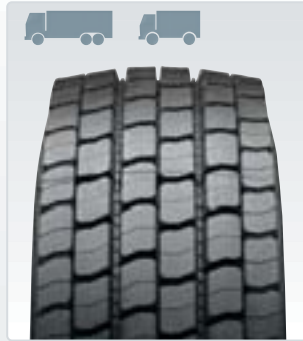
Bild 1208



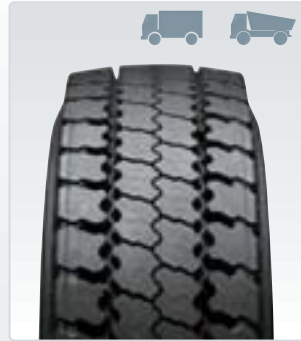
Antriebsachse



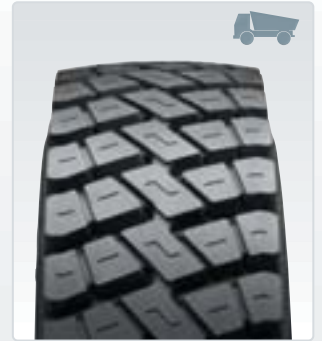
Continental HDL 1 Bild 1218



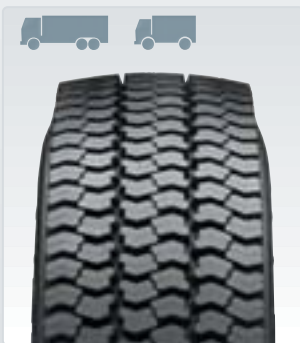
Continental HDR (+) Bild 1228



Continental HDU Bild 1238

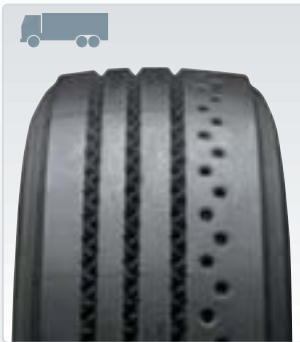


Continental HDC 1 Bild 1248

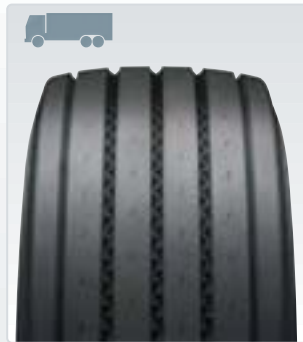


Continental HDW Skandinavia Bild 1258

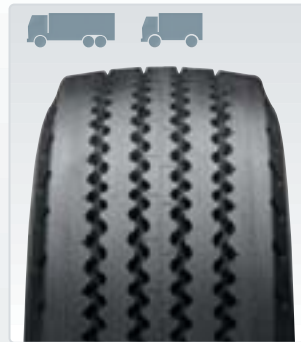
Auflieger



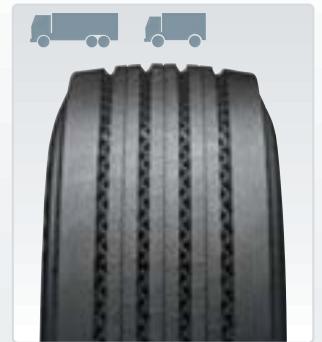
Continental HTL Bild 1268



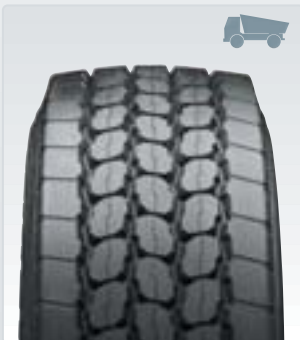
Continental HTL 1 Bild 1278



Continental HTR Bild 1288



Continental HTR 1 Bild 1298



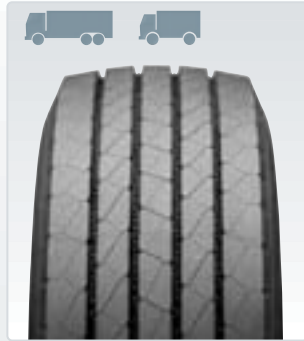
Continental HTC 1 Bild 1308

Vorderachse



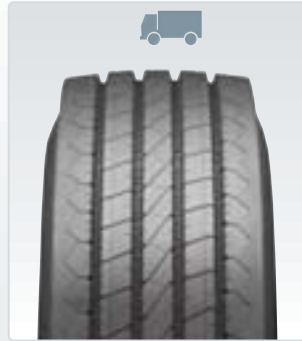
Goodyear
LHS 2

Bild 1318



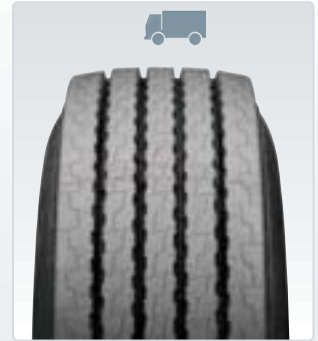
Goodyear
LHS

Bild 1328



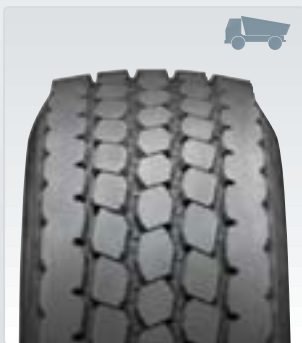
Goodyear
RHS 2

Bild 1338



Goodyear
MCS

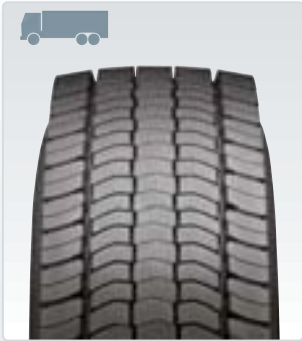
Bild 1348



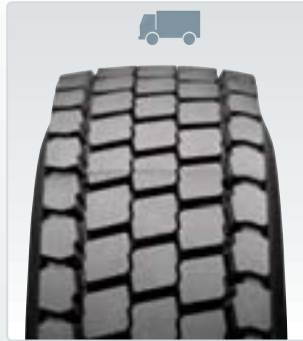
Goodyear
MSS

Bild 1358

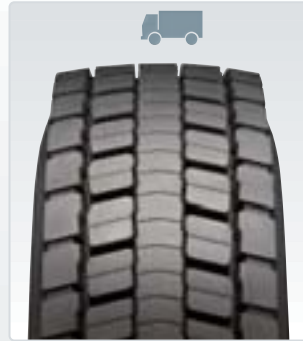
Antriebsachse



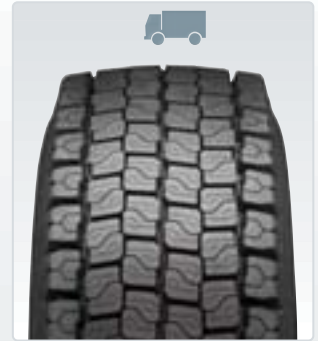
Goodyear LHD 2 Bild 1368



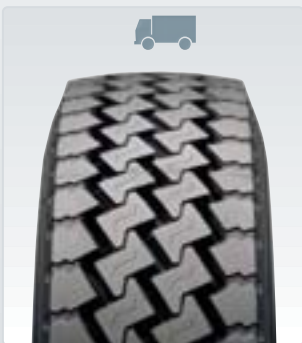
Goodyear RHD Bild 1378



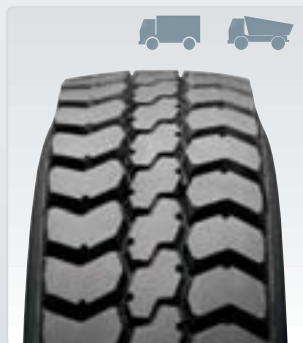
Goodyear RHD 2 Bild 1388



Goodyear WTD Bild 1398

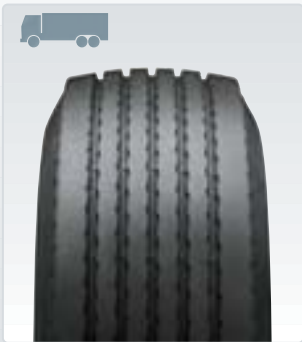


Goodyear MCD Bild 1408

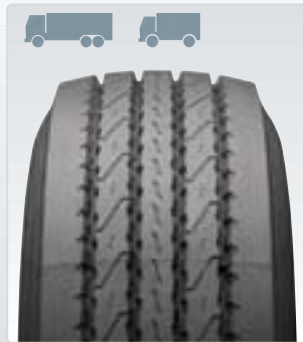


Goodyear MSD Bild 1418

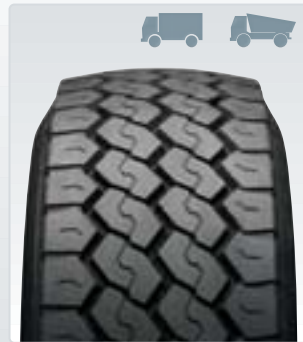
Auflieger



Goodyear LHT Bild 1428

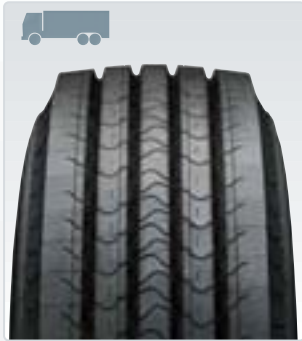


Goodyear RHT Bild 1438



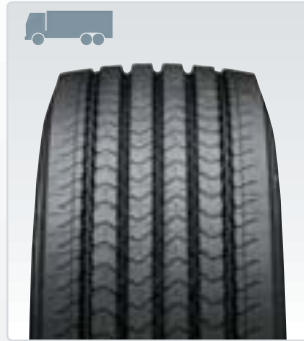
Goodyear MST Bild 1448

Vorderachse



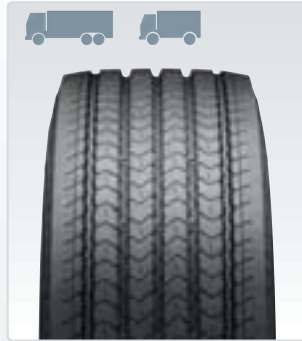
XZA 2 Energy

Bild 1458



XFA 2 Energy Antisplash

Bild 1468



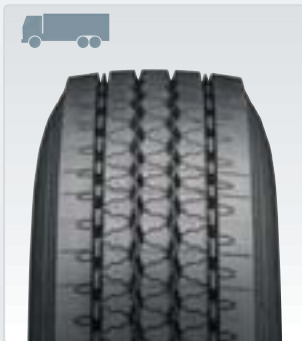
X Energy XF

Bild 1478



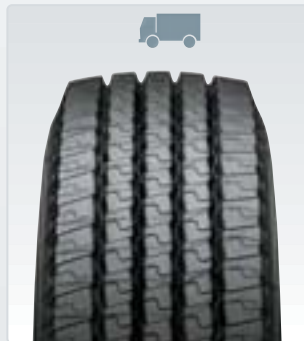
XF 2

Bild 1488



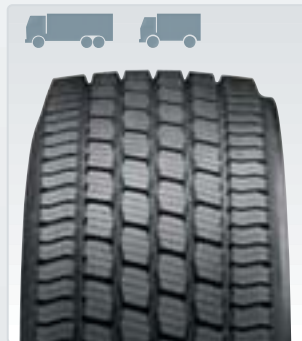
X Coach XZ

Bild 1498



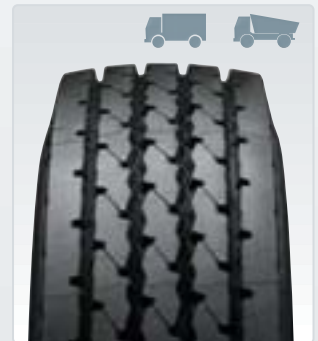
XZE 2+

Bild 1508



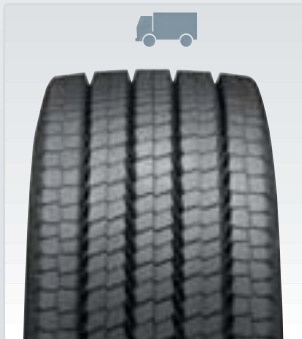
XFN 2 Antisplash

Bild 1518



XZY-2

Bild 1528



X InCity XZU 3

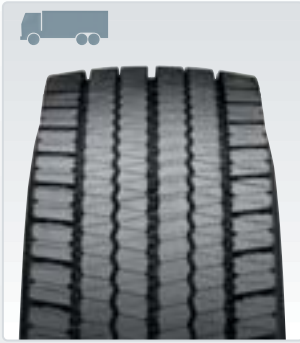
Bild 1538



- Innovativer Michelin-Kalterneuerungsprozess
- Hochleistungslaufstreifen mit geringer Erwärmung und höherer Laufleistung
- Weltweit getestet auf mehr als 100 Milliarden Kilometern

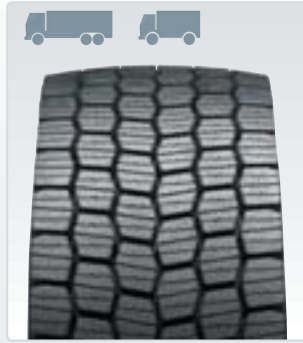
Reduzieren auch Sie Ihre Fuhrparkkosten!

Antriebsachse



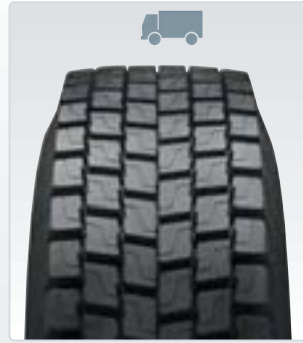
XDA 2+ Energy

Bild 1548



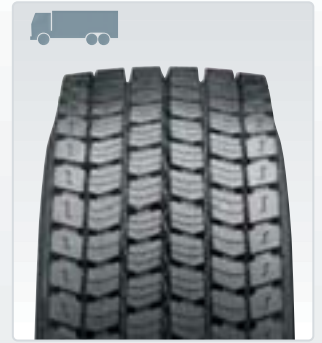
XDN 2 Grip

Bild 1558



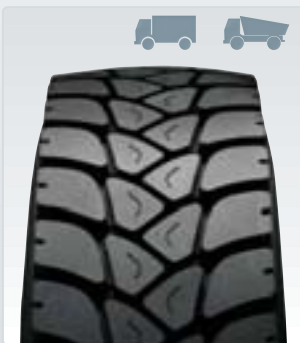
XDE 2+

Bild 1568



X Coach XD

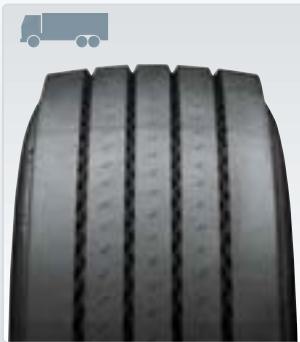
Bild 1578



XDY3

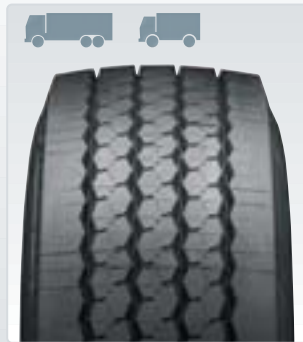
Bild 1588

Auflieger



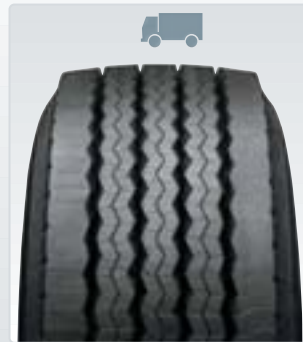
XTA 2+ Energy

Bild 1598



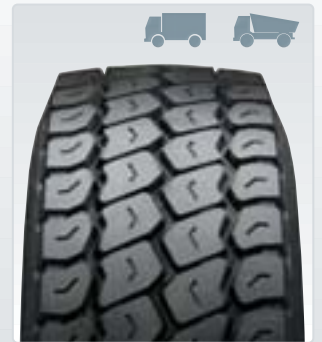
XTE 3

Bild 1608



XTE 2

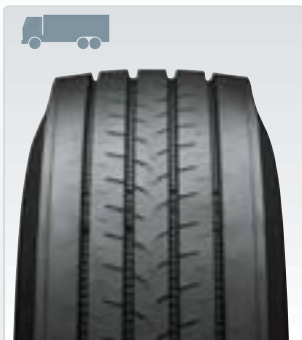
Bild 1618



XZY 3

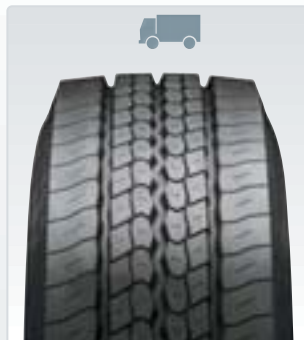
Bild 1628

Vorderachse



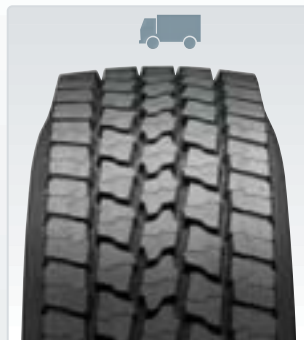
Dunlop
SP 352

Bild 1638



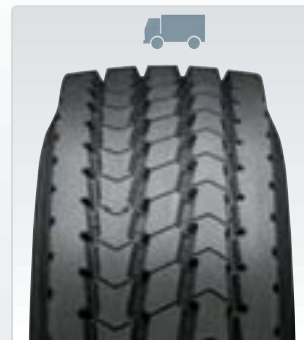
Dunlop
SP 341

Bild 1648



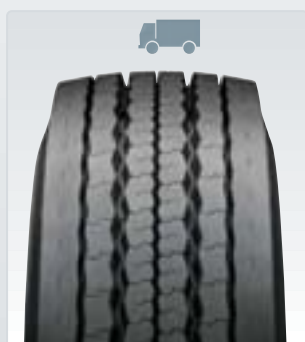
Dunlop
SP 362

Bild 1658



Dunlop
SP 382

Bild 1668

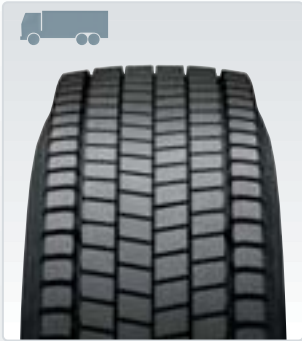


Dunlop
SP 741 City

Bild 1678

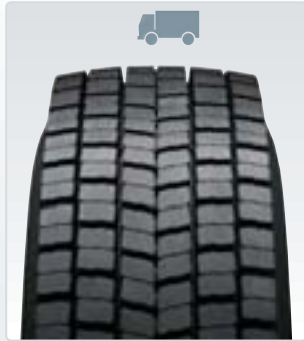


Antriebsachse



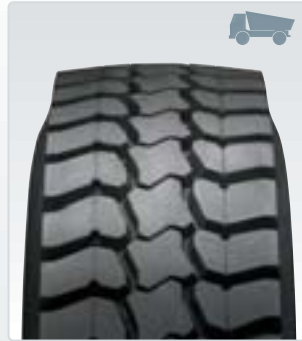
Dunlop
SP 452

Bild 1688



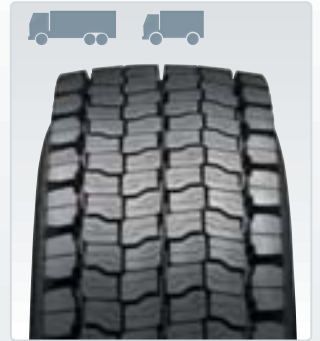
Dunlop
SP 442

Bild 1698



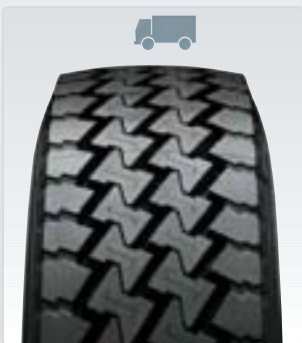
Dunlop
SP 482

Bild 1708



Dunlop
SP 462

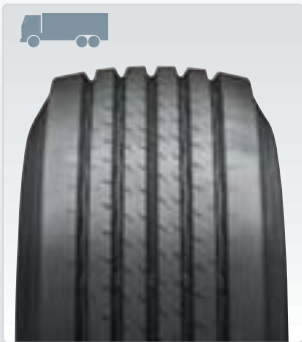
Bild 1718



Dunlop
SP 531 City

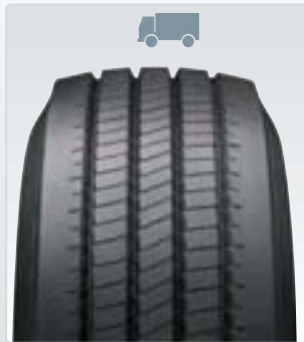
Bild 1728

Auflieger



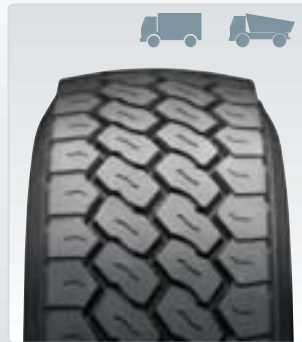
Dunlop
SP 252

Bild 1738



Dunlop
SP 242

Bild 1748



Dunlop
SP 282

Bild 1758

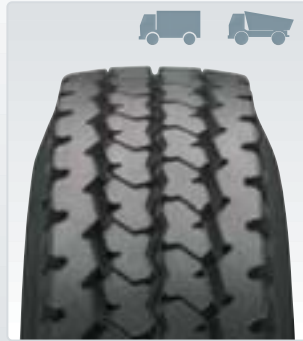
Firestone

Vorderachse



Firestone
FS 400

Bild 1768



Firestone
UT 3000

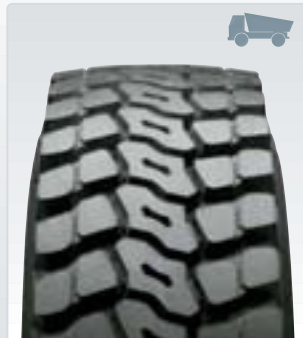
Bild 1778

Antriebsachse



Firestone
FD 600

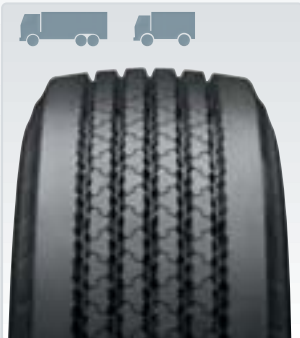
Bild 1788



Firestone
SAT 3000

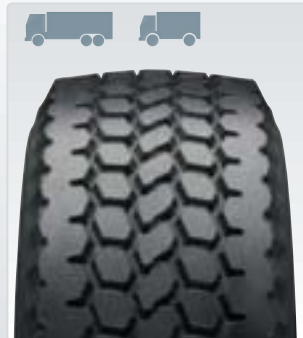
Bild 1798

Auflieger



Firestone
TSP 3000

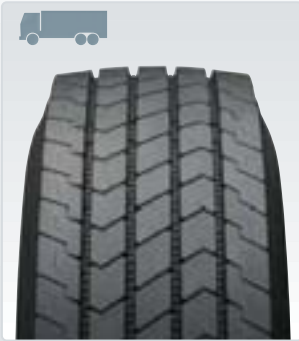
Bild 1808



Firestone
TMP 3000

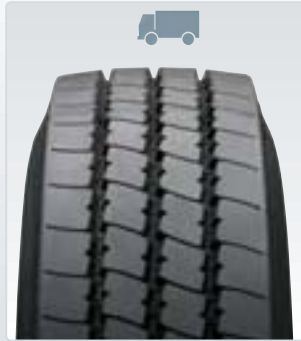
Bild 1818

Vorderachse



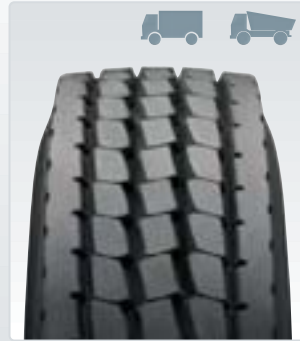
Fulda
Ecocontrol

Bild 1828



Fulda
Regiocontrol

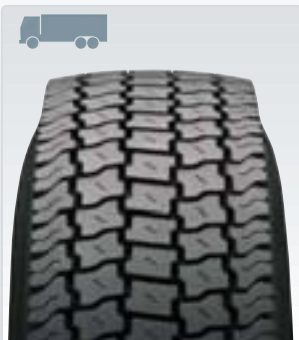
Bild 1838



Fulda
Variocontrol

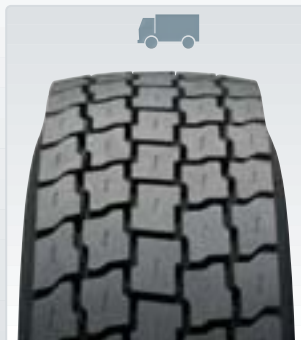
Bild 1848

Antriebsachse



Fulda
Ecoforce

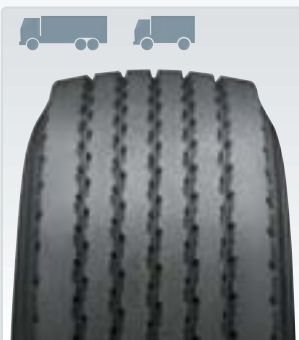
Bild 1858



Fulda
Regioforce

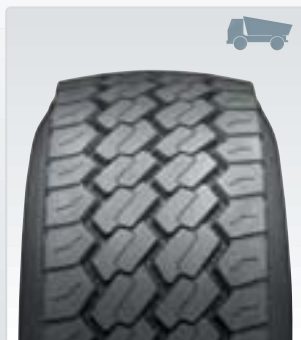
Bild 1868

Auflieger



Fulda
Ecotonn

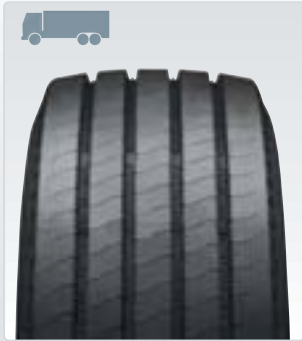
Bild 1878



Fulda
Variotonn

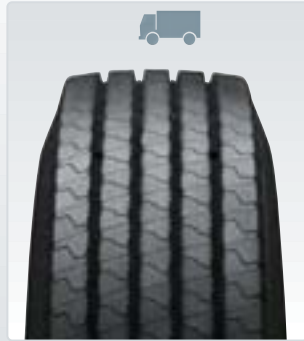
Bild 1888

Vorderachse



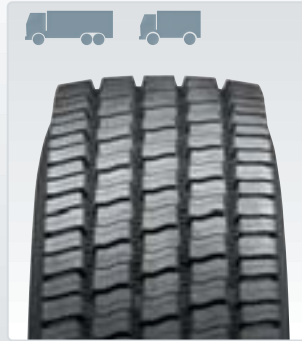
Hankook
AL 02

Bild 1898



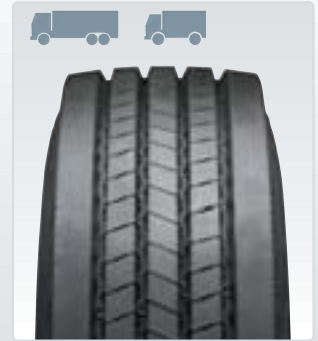
Hankook
AH 11

Bild 1908



Hankook
AW 01

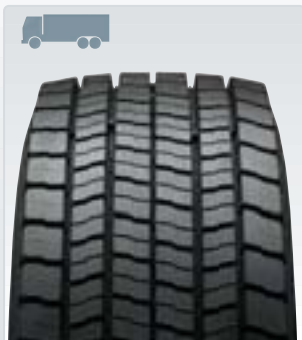
Bild 1918



Hankook
AH 22

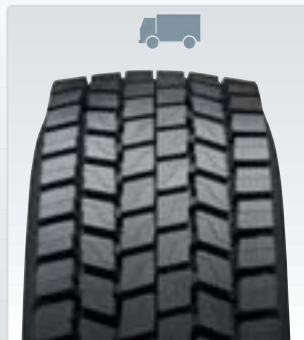
Bild 1928

Antriebsachse



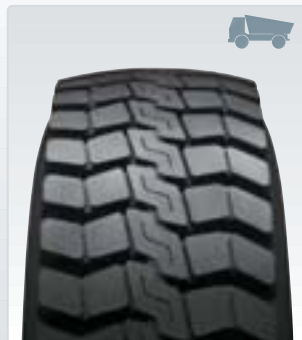
Hankook
DL 02

Bild 1938



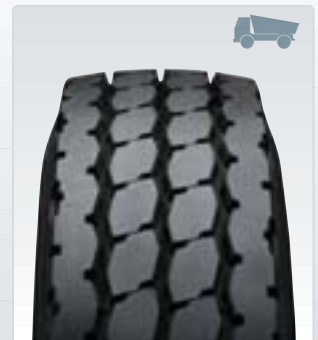
Hankook
DH 05

Bild 1948



Hankook
DM 03

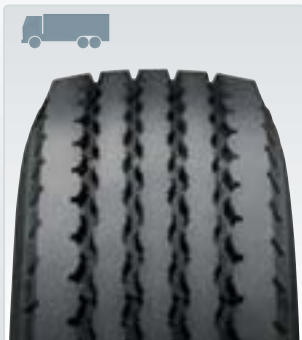
Bild 1958



Hankook
AM 06

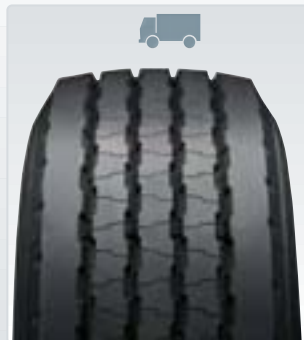
Bild 1968

Auflieger



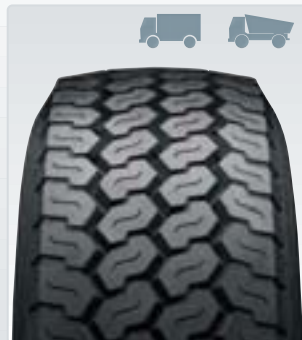
Hankook
TH 02

Bild 1978



Hankook
TH 10

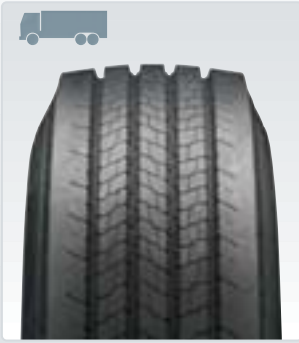
Bild 1988



Hankook
AM 02

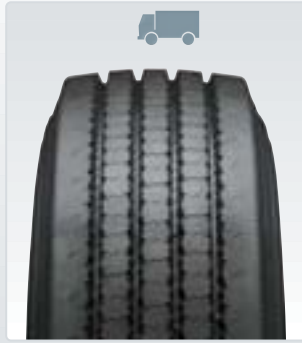
Bild 1998

Vorderachse



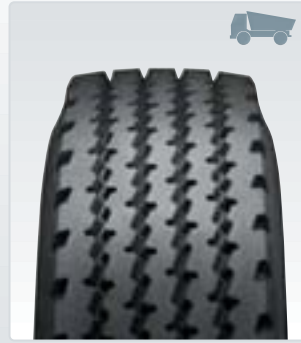
Pirelli
FH 85 Amaranto

Bild 2008



Pirelli
FR 25

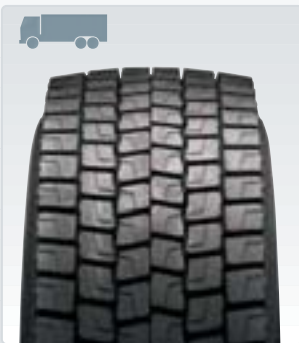
Bild 2018



Pirelli
FG 85

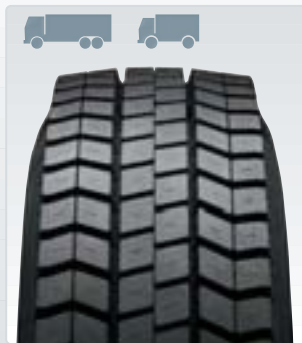
Bild 2028

Antriebsachse



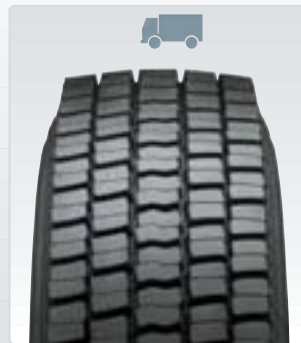
Pirelli
TH 85 Amaranto

Bild 2038



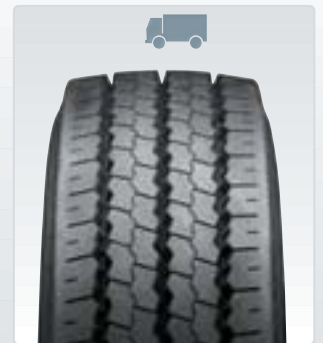
Pirelli
TH 65

Bild 2048



Pirelli
TR 26

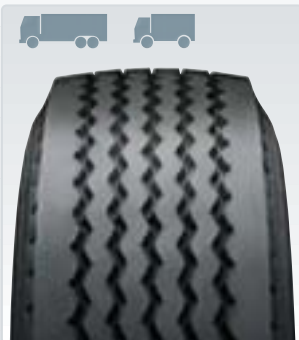
Bild 2058



Pirelli
MC 85

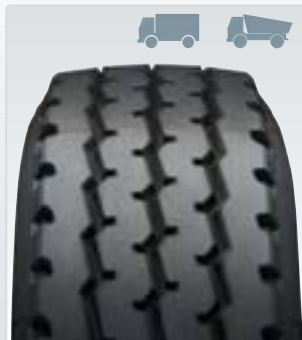
Bild 2068

Auflieger



Pirelli
ST 35

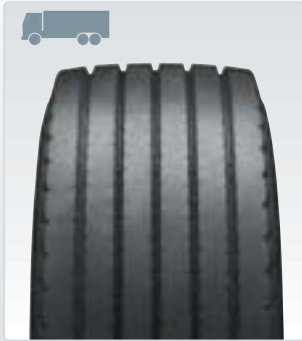
Bild 2078



Pirelli
AP 05

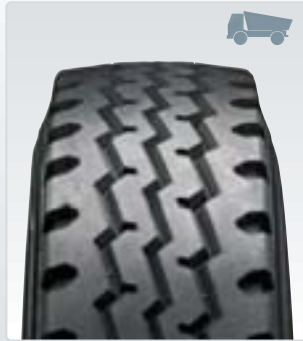
Bild 2088

Vorderachse



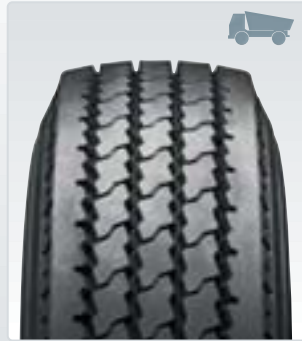
Primewell
PW 902+ (385/55)

Bild 2098



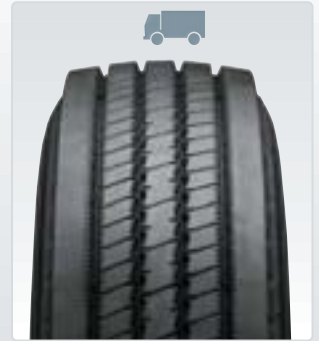
Primewell
PW 01

Bild 2108



Primewell
PW 215

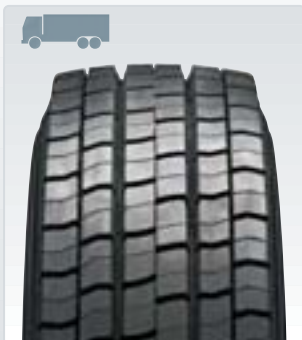
Bild 2118



Primewell
PW 212

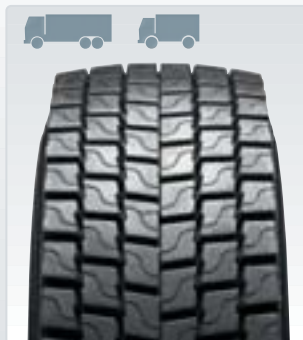
Bild 2128

Antriebsachse



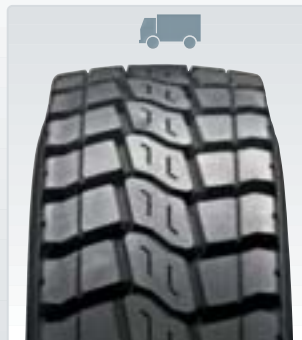
Primewell
PW 610

Bild 2138



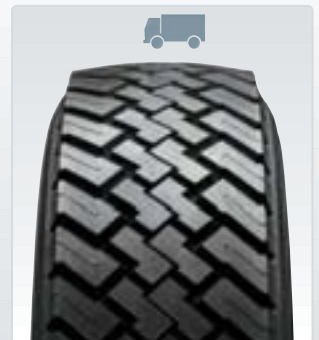
Primewell
PW 622

Bild 2148



Primewell
PW 605

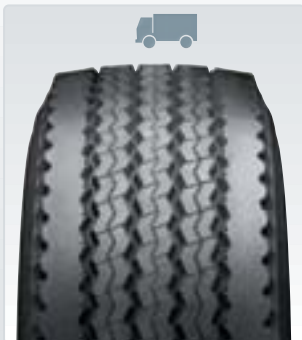
Bild 2158



Primewell
PW 612

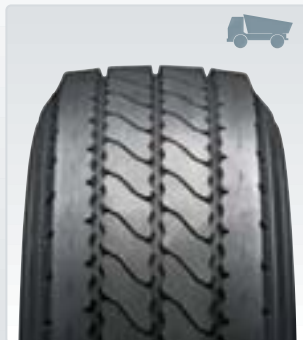
Bild 2168

Auflieger



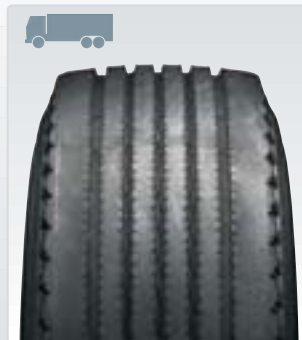
Primewell
PW 912

Bild 2178



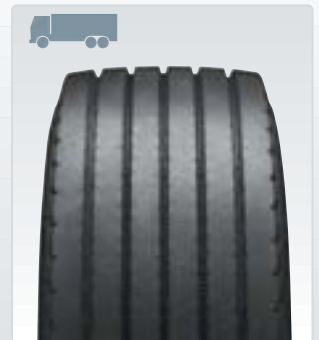
Primewell
PW 802

Bild 2188



Primewell
PW 902+

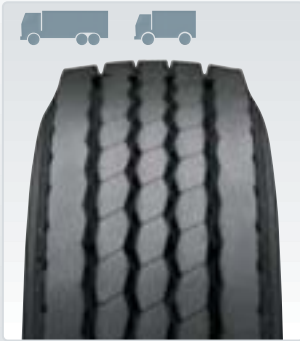
Bild 2198



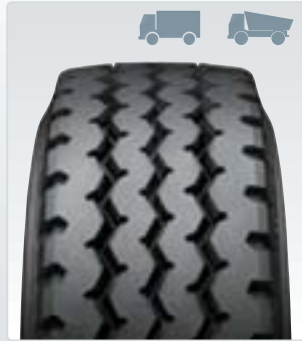
Primewell
PW 902+ (385/55)

Bild 2208

Vorderachse

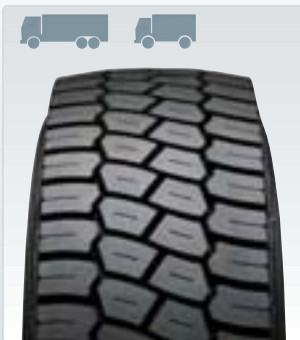


Taurus
TOP 2000 F Bild 2218

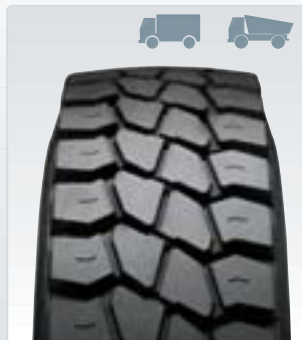


Taurus
TOP 2000 U on/off Bild 2228

Antriebsachse

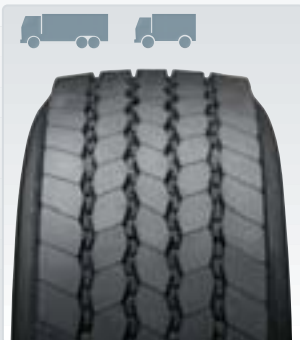


Taurus
TOP 2000 D Bild 2238

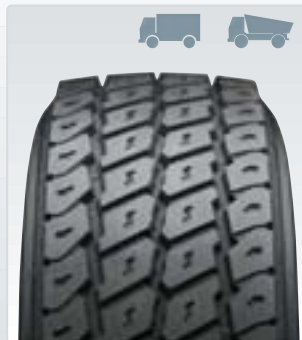


Taurus
TOP 2000 D on/off Bild 2248

Auflieger

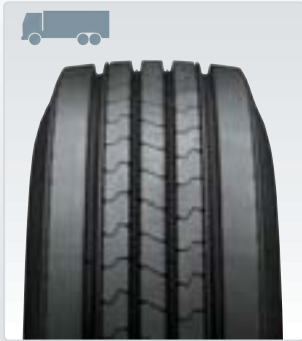


Taurus
TOP 2000 T Bild 2258



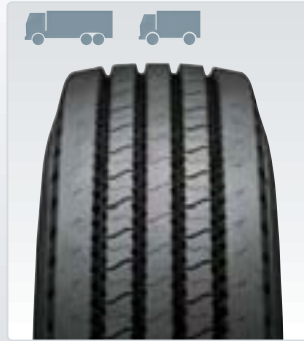
Taurus
TOP 2000 on/off Bild 2268

Vorderachse



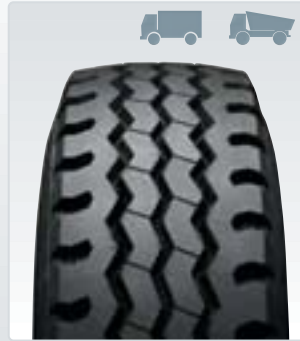
Yokohama
RY 637

Bild 2278



Yokohama
RY 023

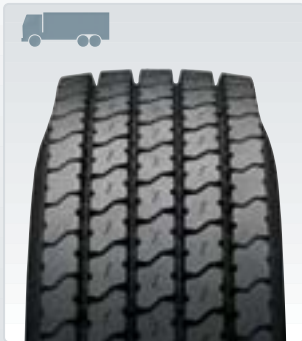
Bild 2288



Yokohama
Y 773

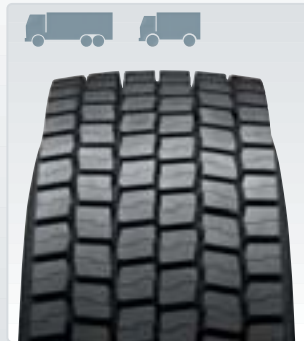
Bild 2298

Antriebsachse



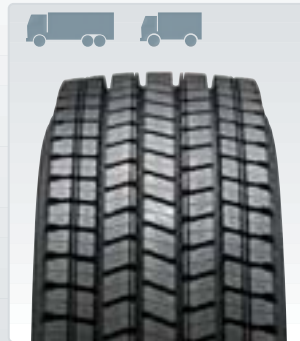
Yokohama
TY 517 E

Bild 2308



Yokohama
TY 607

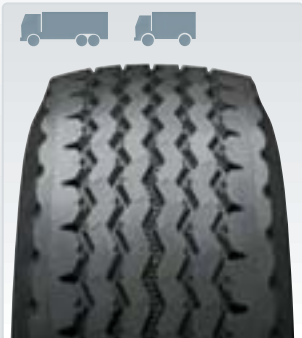
Bild 2318



Yokohama
SY 397

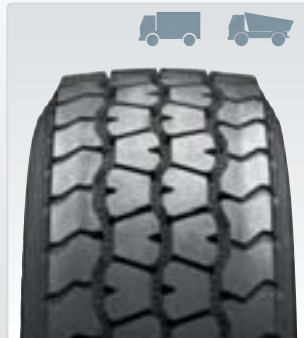
Bild 2328

Auflieger



Yokohama
RY 253

Bild 2338



Yokohama
MY 507 A

Bild 2348

Hersteller	Vorderachse			Antrieb			Aufleger		
	Profil	Einsatz		Profil	Einsatz		Profil	Einsatz	
Bridgestone	R 249	FV	NV	M 749	FV		R 174	FV	
	R 297	FV	NV	M 729	FV	NV	R 164	FV	NV
	R 227	FV	NV	M 730	FV	NV	M 748		NV BA
	M 788	FV	NV	M 788	FV	NV	R 168	FV	NV
	M 840		NV BA	M 840		NV BA			
				L 355					BA
Continental	HSL 1	FV		HDL 1	FV		HTL	FV	
	HSR 1	FV	NV	HDR (+)	FV	NV	HTL 1	FV	
	HSU 1		NV	HDU		NV BA	HTR	FV	NV
	HSC 1			HDC 1		BA	HTR 1	FV	NV
	HSW Skandinavien	FV	NV	HDW Skandinavien	FV	NV	HTC 1		
Goodyear	LHS 2	FV		LHD 2	FV		LHT	FV	
	LHS	FV	NV	RHD		NV	RHT	FV	NV
	RHS 2		NV	RHD 2		NV	MST		NV BA
	MCS		NV	WTD		NV			
	MSS			MCD		NV			
				MSD		NV BA			
Michelin Recamic Remix	XZA 2 Energy	FV		XDA 2+ Energy	FV		XTA 2+ Energy	FV	
	XFA 2 Energy Antisplash	FV		XDN2 Grip	FV	NV	XTE 3	FV	NV
	X Energy XF	FV	NV	XDE 2+		NV	XTE 2		NV
	XF 2	FV	NV	X Coach XD	FV		XZY 3		NV BA
	X Coach XZ	FV		XDY3		NV BA			
	XZE 2+		NV						
	XFN 2 Antisplash	FV	NV						
	XZY-2		NV BA						
X InCity XZU 3		NV							
Dunlop	SP 352	FV		SP 452	FV		SP 252	FV	
	SP 341		NV	SP 442		NV	SP 242		NV
	SP 362		NV	SP 482			SP 282		NV BA
	SP 382		NV	SP 462	FV	NV			
	SP 741 City		NV	SP 531 City		NV			
Firestone	FS 400	FV	NV	FD 600	FV	NV	TSP 3000	FV	NV
	UT 3000		NV BA	SAT 3000		BA	TMP 3000	FV	NV
Fulda	Ecocontrol	FV		Ecoforce	FV		Ecotonn	FV	NV
	Regiocontrol		NV	Regioforce		NV	Variotonn		NV BA
	Variocontrol		NV BA						
Hankook	AL 02	FV		DL 02	FV		TH 02	FV	
	AH 11		NV	DH 05		NV	TH 10		NV
	AW 01	FV	NV	DM 03			AM 02		NV BA
	AH 22	FV	NV	AM 06		BA			
Pirelli	FH 85 Amaranto	FV		TH 85 Amaranto	FV		ST 35	FV	NV
	FR 25		NV	TH 65	FV	NV	AP 05		NV BA
	FG 85			TR 26		NV			
				MC 85		NV			
Primewell	PW902+ (385/55)	FV		PW610	FV		PW912		NV
	PW01			PW622	FV	NV	PW802		BA
	PW215		BA	PW605		NV	PW902+	FV	
	PW212		NV	PW612		NV	PW902+ (385/55)	FV	
Taurus	TOP 2000 F	FV	NV	TOP 2000 D	FV	NV	TOP 2000T	FV	NV
	TOP 2000 U on/off		NV BA	TOP 2000 D on/off		BA	TOP 2000 on/off		NV BA
Yokohama	RY 637	FV		TY 517 E	FV		RY 253	FV	NV
	RY 023	FV	NV	TY 607	FV	NV	MY 507 A		NV BA
	Y 773		NV BA	SY 397	FV	NV			

Interpneu
Handelsgesellschaft

Interpneu Handelsgesellschaft mbH
An der Roßweid 23-25
D-76229 Karlsruhe

Fon 0180 2 995555-222
Fax 0180 2 995555-404

info-ip@pneu.com
www.interpneu.de

mit freundlicher Empfehlung